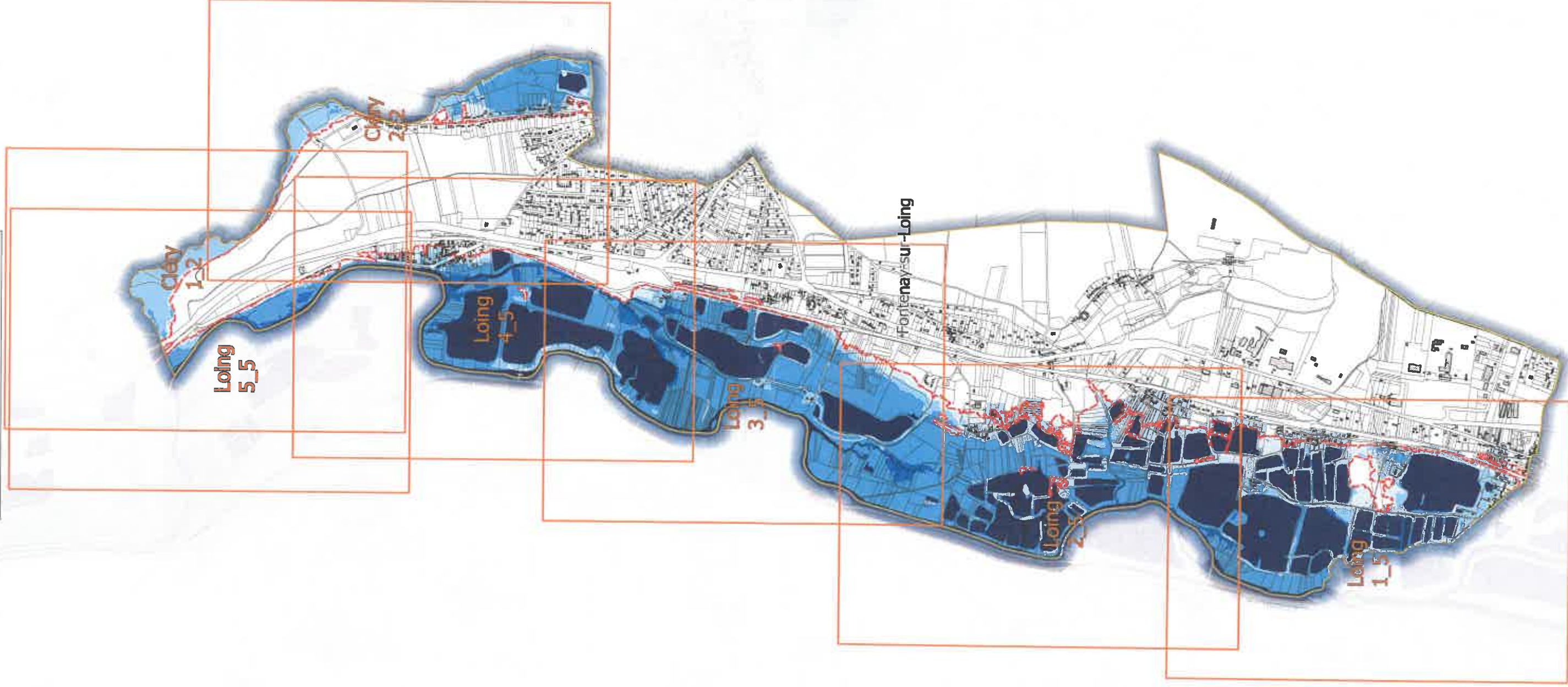


Commune de Fontenay-sur-Loing
Répartition des Planches de l'atlas

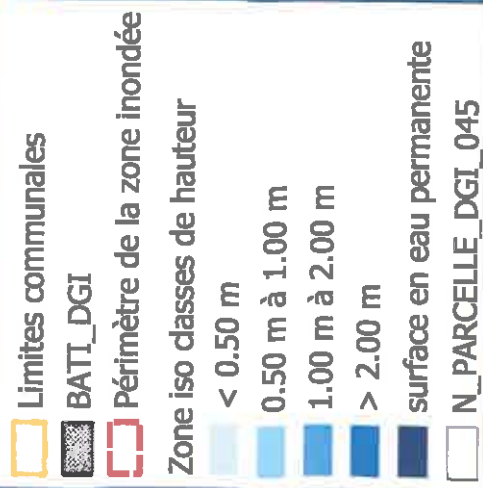


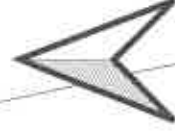
Dordives

Ferrières-en-Gâtinais

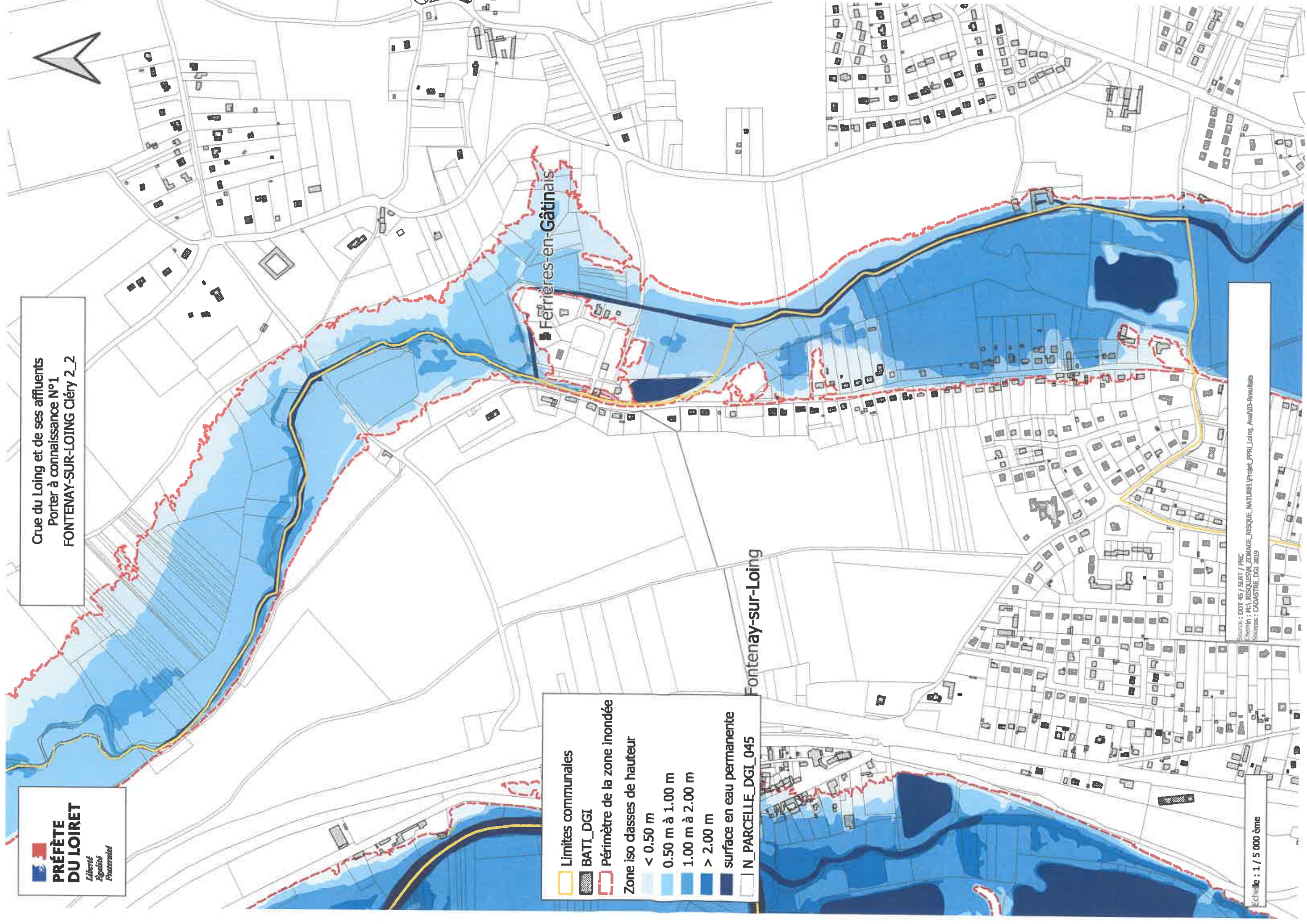
Fontenay-sur-Loing

Nargis

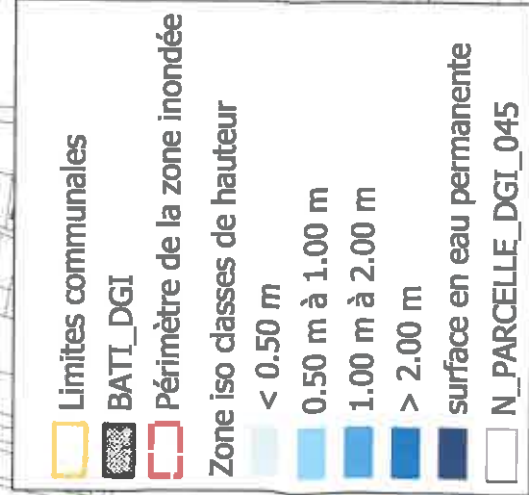




Limites communales
 BATTI_DGI
 Périmètre de la zone inondée
Zone iso classes de hauteur
 < 0.50 m
 0.50 m à 1.00 m
 1.00 m à 2.00 m
 > 2.00 m
 surface en eau permanente
 N_PARCELLE_DGI_045

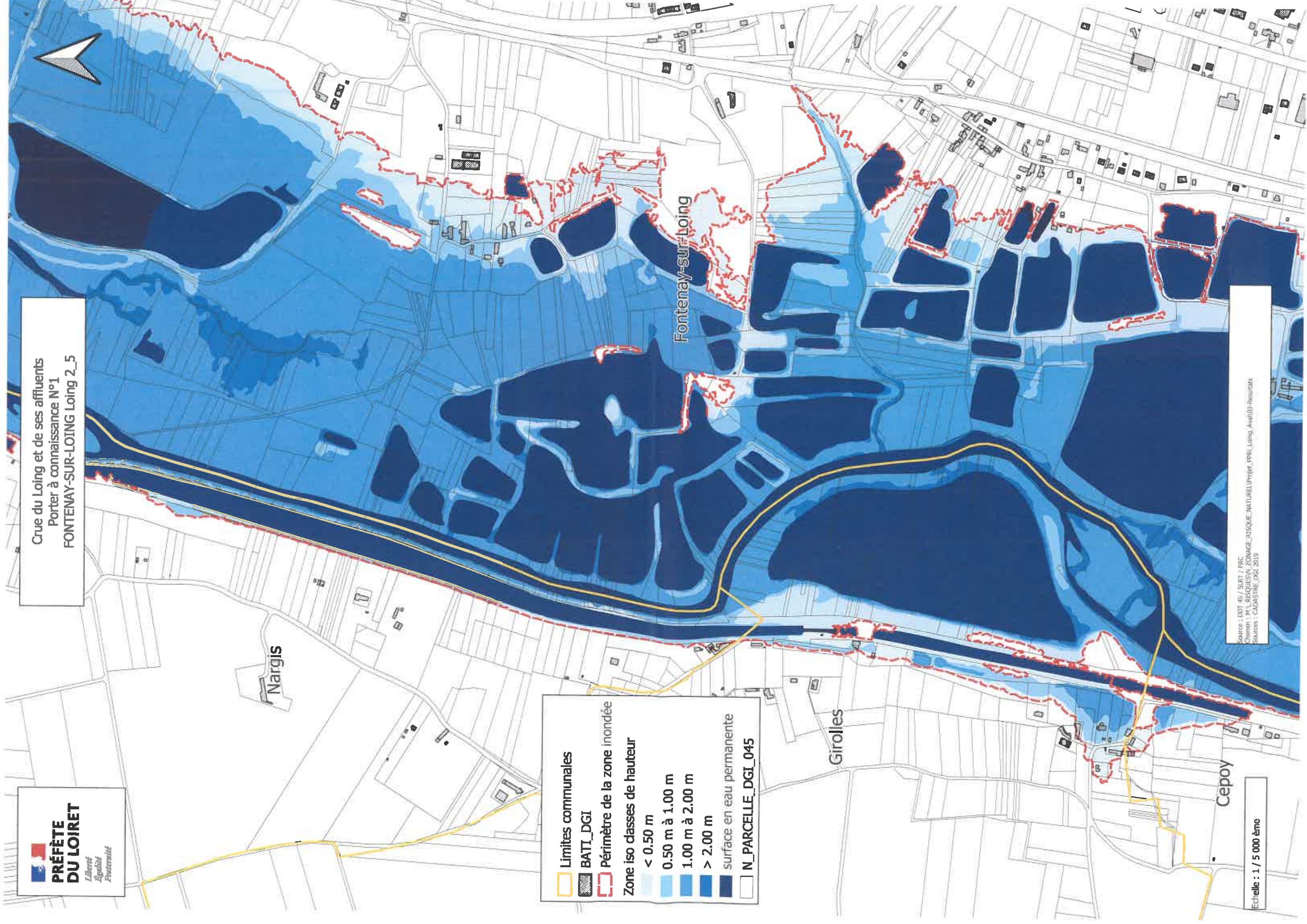











Girolles



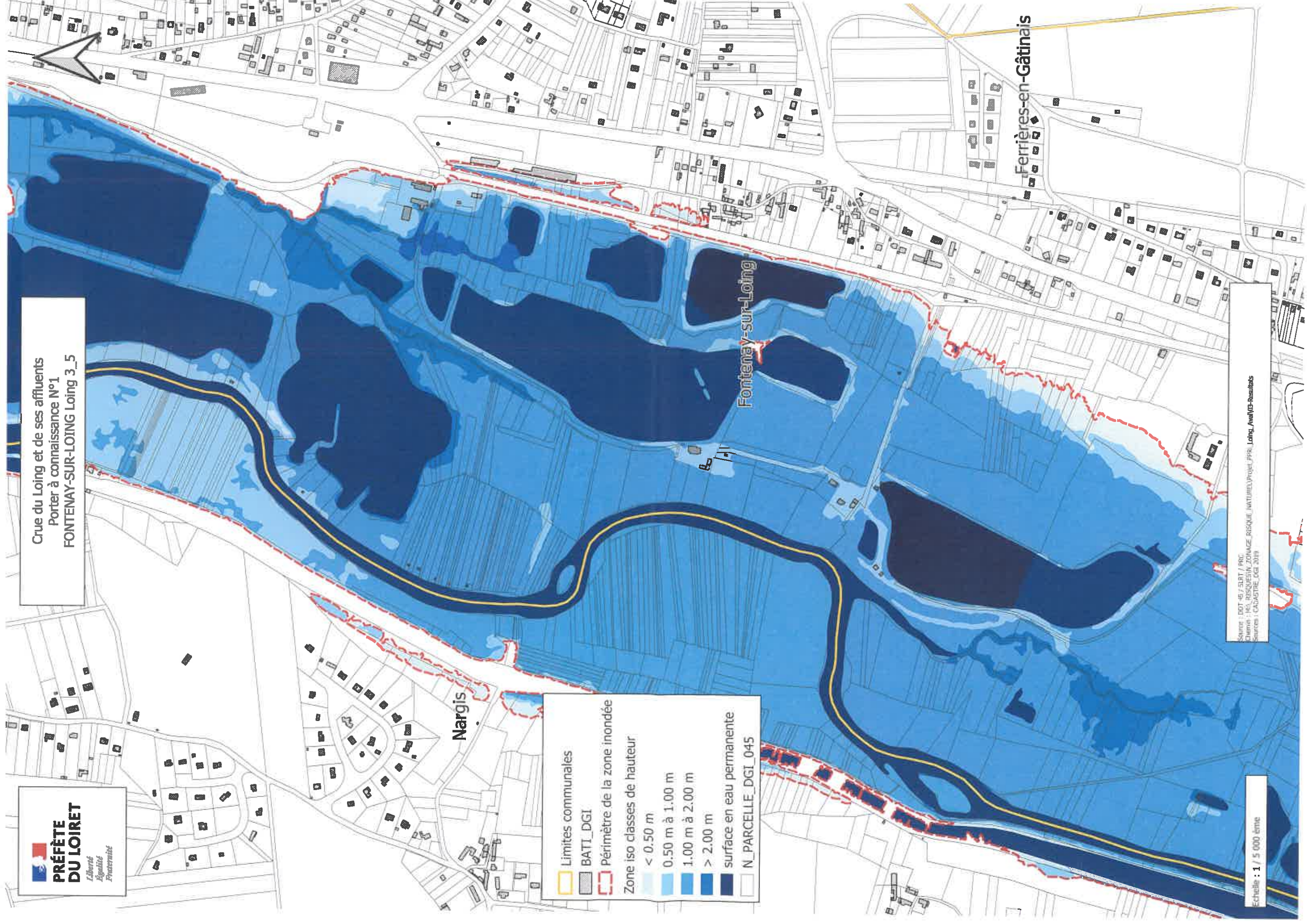
Fontenay-sur-Loing




Cepoy







	Limites communales
	BATI_DGI
	Périmètre de la zone inondée
Zone iso classes de hauteur	
	< 0.50 m
	0.50 m à 1.00 m
	1.00 m à 2.00 m
	> 2.00 m
	surface en eau permanente
	N_PARCELLE_DGI_045



Source : DDT 45 / SURE / PRC
 Chemin : M1_SISQUEVA_ZONAGE_DISQUE_NATUREL/Projet_parc_Loing_Avail03-Reunions
 Sources : CADASTRE_DGI_2019



 Limites communales
 BATI_DGI
 Périmètre de la zone inondée

Zone iso classes de hauteur

-  < 0.50 m
-  0.50 m à 1.00 m
-  1.00 m à 2.00 m
-  > 2.00 m

 surface en eau permanente
 N_PARCELLE_DGI_045

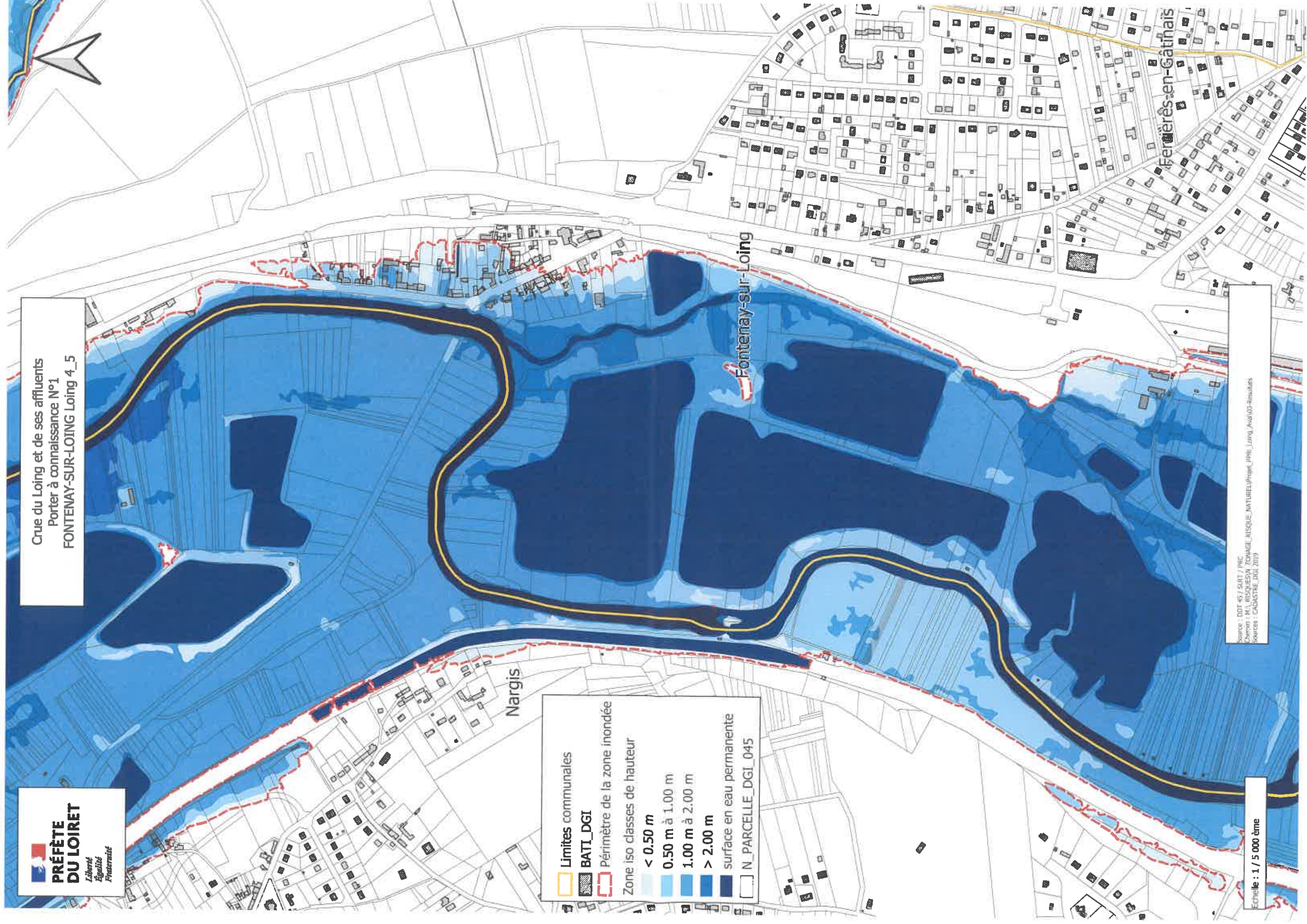
Source : DDT 45 / SIRT / PRC
Client : Mairie de Fontenay-sur-Loing
Sources : CADASTRE DGI 2013

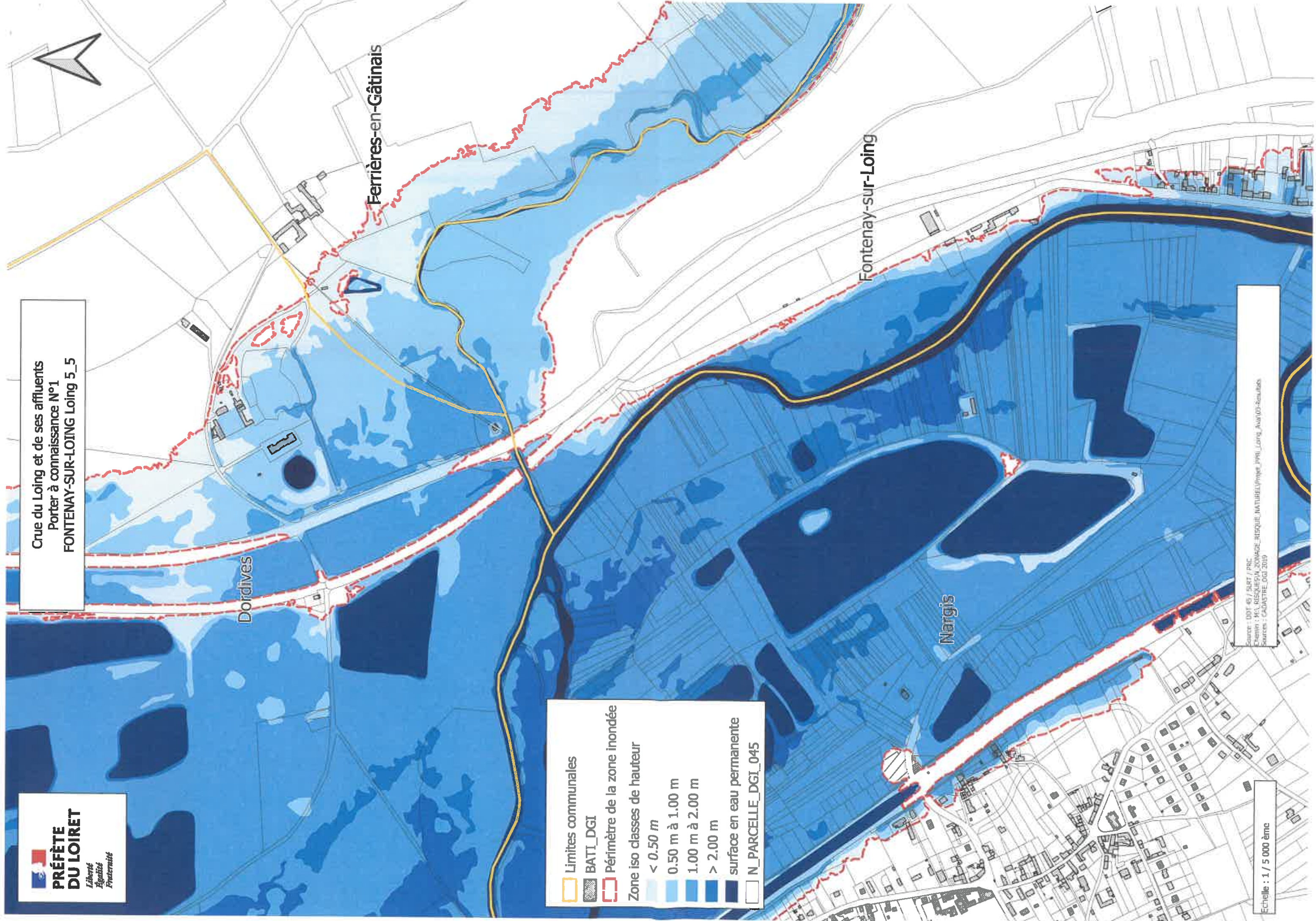
Crue du Loing et de ses affluents
Porter à connaissance N°1
FONTENAY-SUR-LOING 4_5

	Limites communales
	BATI_DGI
	Périmètre de la zone inondée
Zone iso classes de hauteur	
	< 0.50 m
	0.50 m à 1.00 m
	1.00 m à 2.00 m
	> 2.00 m
	surface en eau permanente
	N_PARCELLE_DGI_045

Source : DOT 45 / SART / INC
 Chema : M. BESSESON, ZONAGE_INISQUE_NATUREL/Prépaq_PPHI_Loing_Aval/03-Insuulais
 Sources : CADASTRE, DGI 2019

Echelle : 1 / 5 000 ème





Limites communales
 BATI_DGI
 Périmètre de la zone inondée
 Zone iso classes de hauteur
 < 0.50 m
 0.50 m à 1.00 m
 1.00 m à 2.00 m
 > 2.00 m
 surface en eau permanente
 N_PARCELLE_DGI_045

Source : DDT 45 / SIRT / PBC
 Ecrémis : M31, RESURFEM 2004/06, HESQUE, NATUBELLYNQUE, JPPH, Loing, AVAL05-Resultats
 Sources : CADASTRE, DGI 2019



Commune de Girolles
Répartition des Planches de l'atlas



Nargis

Girolles

Cepoy

Fontenay-sur-Loing

